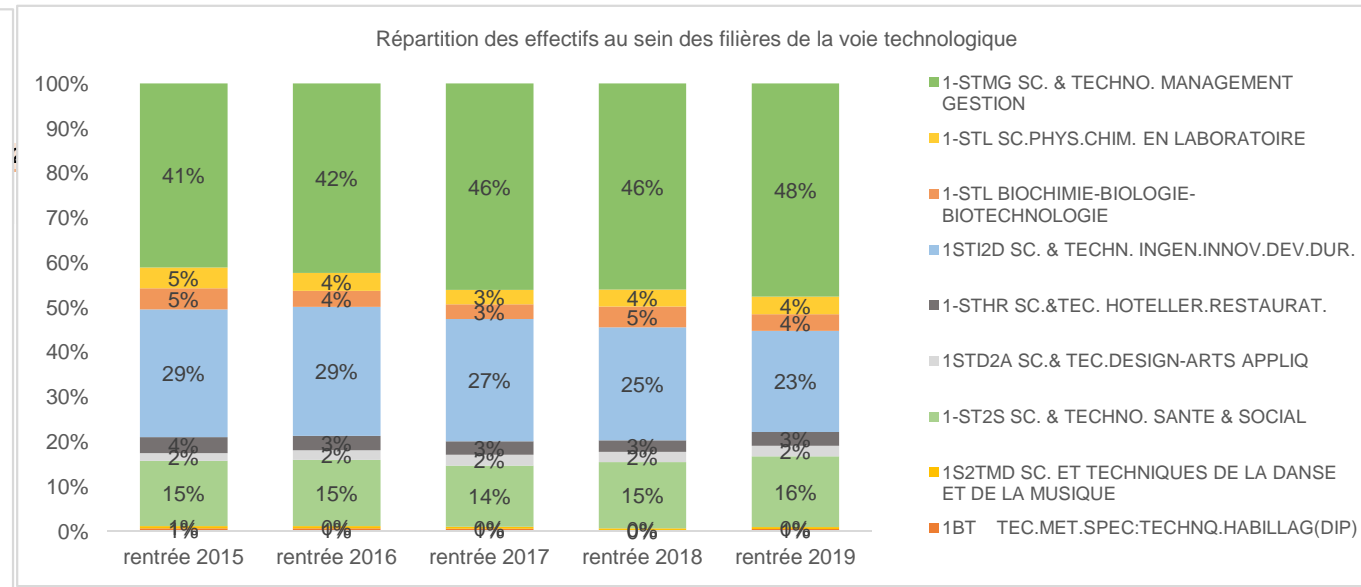
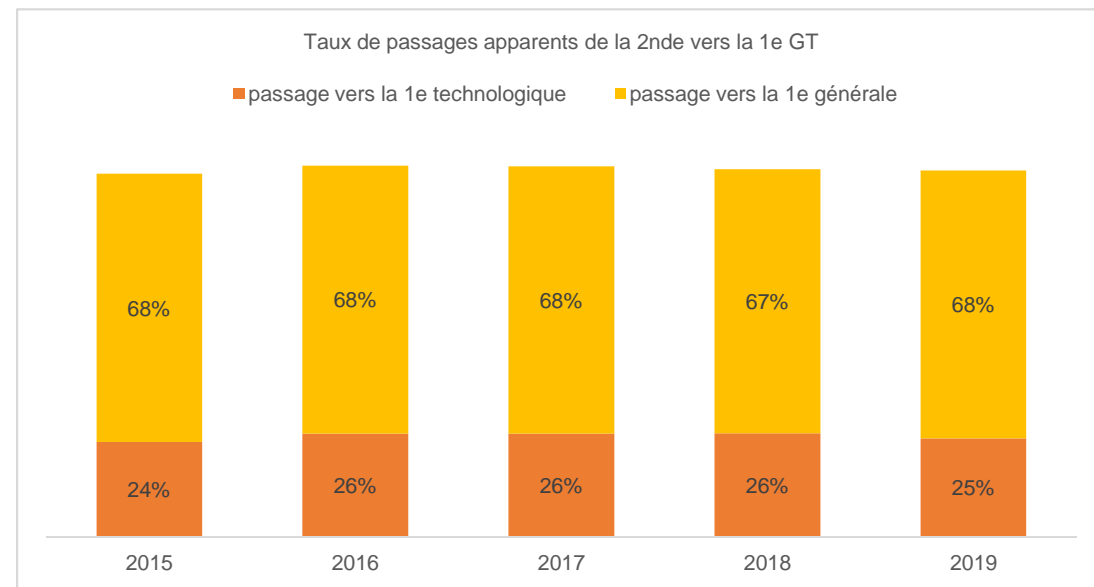


Evolution des effectifs de 1ère GT

Formation	rentrée 2019	rentrée 2018	rentrée 2017	rentrée 2016	rentrée 2015
1BT TEC.MET.SPEC:TECHNQ.HABILLAG(DIP)	11	6	13	15	14
1S2TMD SC. ET TECHNIQUES DE LA DANSE ET	9	9	10	12	11
1-ST2S SC. & TECHNO. SANTE & SOCIAL	345	343	317	357	311
1STD2A SC.& TEC.DESIGN-ARTS APPLIQ	53	53	56	52	36
1-STHR SC.&TEC. HOTELLER.RESTAURAT.	67	60	69	77	76
1STI2D SC. & TECHN. INGEN.INNOV.DEV.DUR.	494	584	634	693	609
1-STL BIOCHIMIE-BIOLOGIE-BIOTECHNOLOGIE	80	109	76	87	101
1-STL SC.PHYS.CHIM. EN LABORATOIRE	86	88	75	95	99
1-STMG SC. & TECHNO. MANAGEMENT GESTIC	1041	1066	1068	1019	876
PREMIERE GENERALE	5969	5932	6011	6247	6034
Total général	8155	8250	8329	8654	8167
Effectifs de 2nde GT n-1	8773	8843	8861	9190	8866

Formation	rentrée 2019	rentrée 2018	rentrée 2017	rentrée 2016	rentrée 2015
1BT TEC.MET.SPEC:TECHNQ.HABILLAG(DIP)	0%	0%	0%	0%	0%
1S2TMD SC. ET TECHNIQUES DE LA DANSE ET	0%	0%	0%	0%	0%
1-ST2S SC. & TECHNO. SANTE & SOCIAL	4%	4%	4%	4%	4%
1STD2A SC.& TEC.DESIGN-ARTS APPLIQ	1%	1%	1%	1%	0%
1-STHR SC.&TEC. HOTELLER.RESTAURAT.	1%	1%	1%	1%	1%
1STI2D SC. & TECHN. INGEN.INNOV.DEV.DUR.	6%	7%	8%	8%	7%
1-STL BIOCHIMIE-BIOLOGIE-BIOTECHNOLOGIE	1%	1%	1%	1%	1%
1-STL SC.PHYS.CHIM. EN LABORATOIRE	1%	1%	1%	1%	1%
1-STMG SC. & TECHNO. MANAGEMENT GESTIC	13%	13%	13%	12%	11%
PREMIERE GENERALE	73%	72%	72%	72%	74%
Taux de passage 2nde GT -> 1ere GT	93,0%	93,3%	94,0%	94,2%	92,1%



Source: SYSCA constat de rentrée 2019